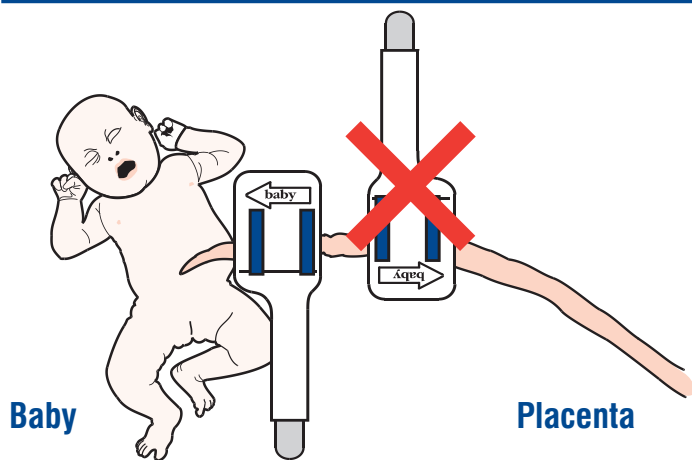


Suggestions & Precautions

Cordguard™

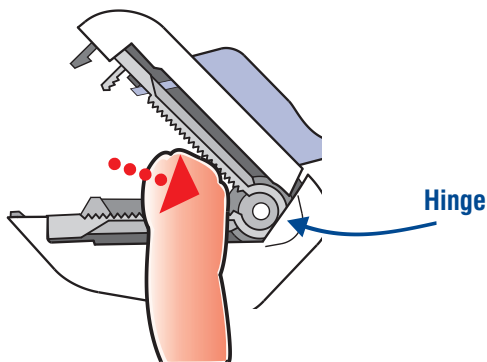
Please use in conjunction with "Instructions for Use" located on the package label.

- 1 Before inserting cord, be sure that Cordguard is oriented in the proper direction:**

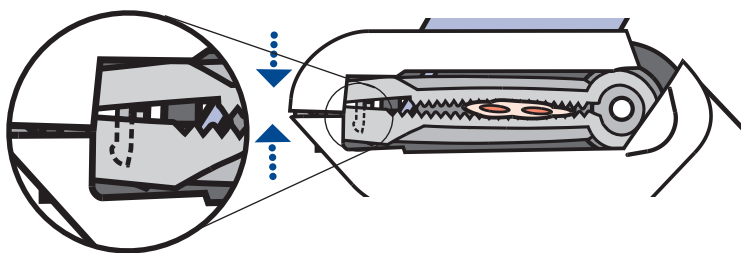


The ARROW on the top of the device must be pointed TOWARD THE BABY for the cord clamp to be properly applied to the baby's umbilical stump. (If the device is inadvertently turned 180 degrees in the wrong direction and the cord is cut, a physician should either apply an independent cord clamp, or use a second Cordguard oriented in the correct direction.) Removal of a misoriented device is not recommended.

- 2 Place the umbilical cord in the jaw as close to the hinge as possible:**



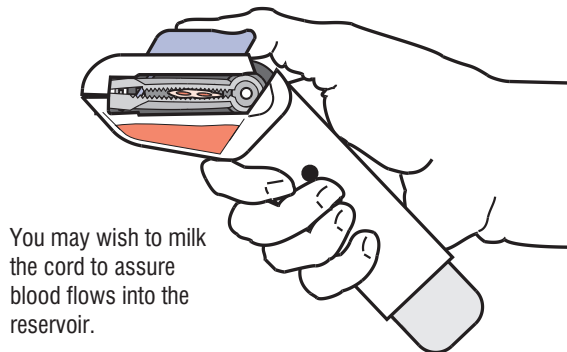
- 3 Observe that the cord clamp properly engages while closing the lid:**



Utah Medical recommends that a physician observe clamp engagement and assure the lid is closed BEFORE depressing the left blue actuator which severs the cord. The clamp will work reliably when it is properly engaged. After the umbilical cord clamp is applied (cord severed and baby released), any blood seepage at the end of the stump indicates the clamp should be squeezed between the fingers one click tighter. Removal of cord clamp is not recommended.

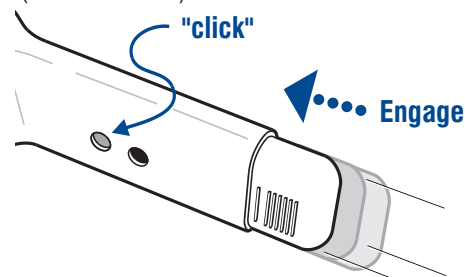
- 4 Hold the device upright...**

while blood is flowing inside the device.

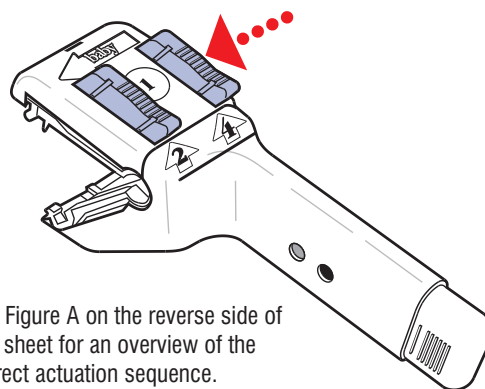


- 5 Engage blood collection tubes:**

Push tube holder up into handle until the detent clicks after the reservoir (inside the device) fills with blood.



- 6 Depress the right blue actuator to clamp off the placental side of the cord.**



See Figure A on the reverse side of this sheet for an overview of the correct actuation sequence.

- 7 Remove tubes from handle and label for lab.**



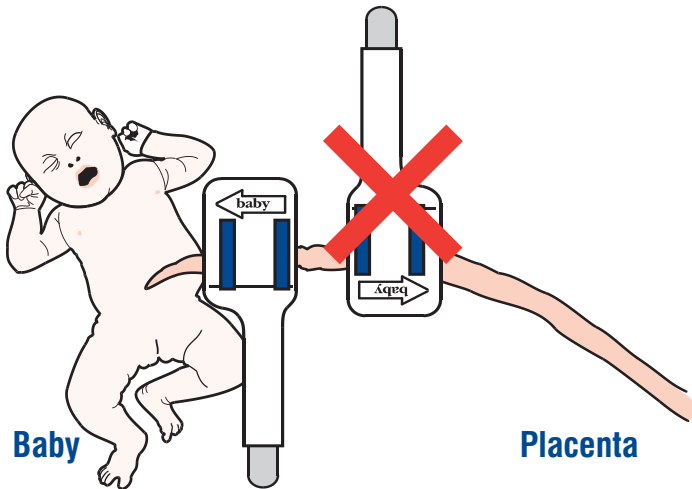
Utah Medical Products, Inc.
7043 South 300 West
Midvale, Utah, 84047
Call Toll Free: 800 533-4984

Additional Suggestions and Precautions for C-Sections

Cordguard™

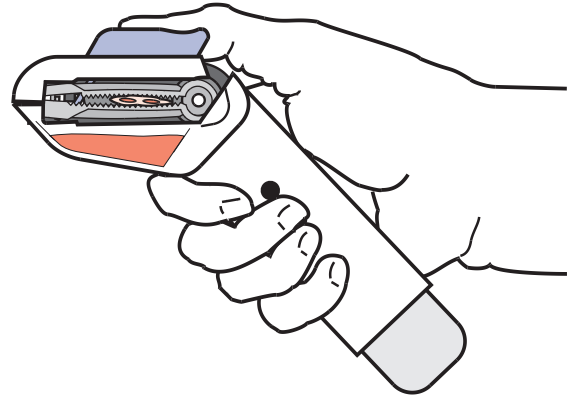
Please use in conjunction with "Instructions for Use" located on the package label and the precautions on the opposite side of this sheet.

- 1 Be sure that Cordguard is oriented in the proper direction:**



- 4 Hold the device upright and below the placenta...**

while blood is flowing inside the device.



- 2 When pressing the left, blue actuator, hold Cordguard in a position below the placenta...**

with as much of the cord on the side of the mother as possible.

- 3 Milk the cord before engaging tubes if reservoir hasn't filled...**

in order to assure blood flows into the device reservoir.

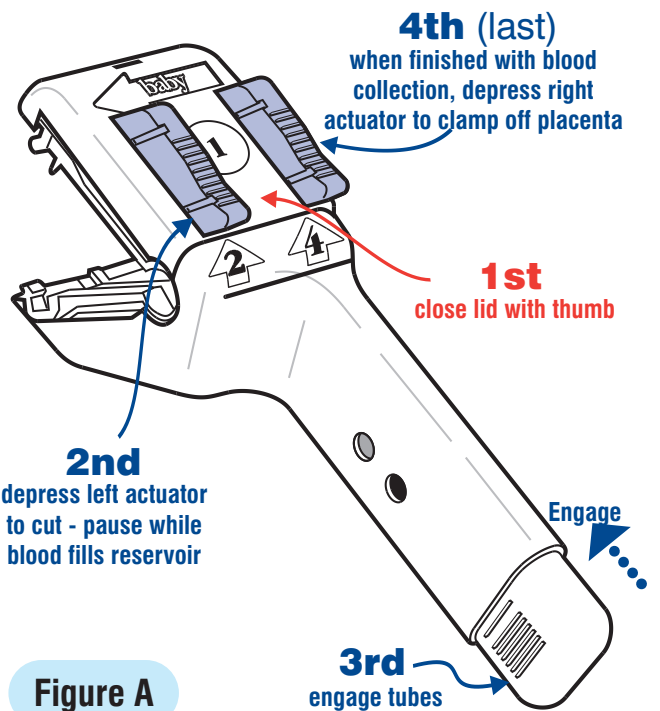
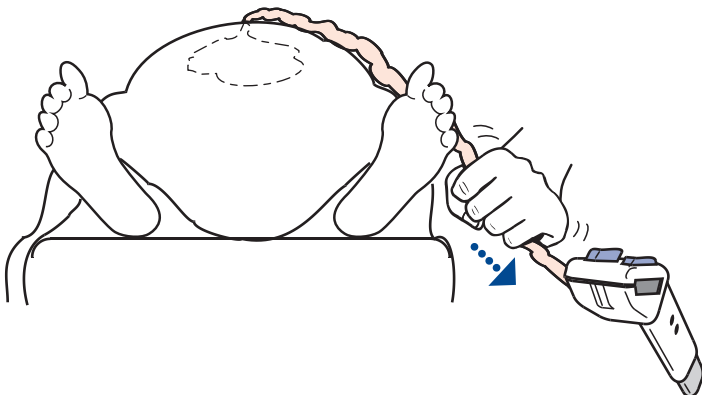


Figure A

- Always depress blue actuators in the proper order.
- Actuators should be fully depressed for device to function properly.